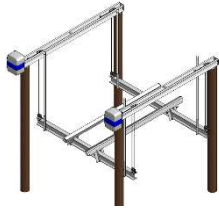


When Buying A Boat Lift

Consider these 10 Features...



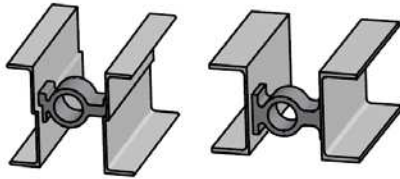
1

Aluminum & Stainless Steel Construction

Aluminum is stronger and lighter than steel, making our lifts easier to install. Aluminum and stainless steel do not rust in a marine environment, unlike modern galvanized steel made under current EPA standards.

Stepped Channel

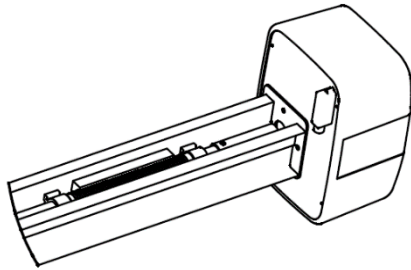
Standard C-Channel



2

Stepped Channel Top Beam

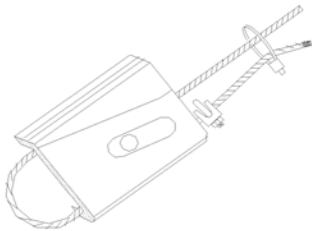
Our top beams are made with stepped channel which provides structural support for the drive bearing blocks and eliminates shear loads on the weld, a major improvement over standard C channel used by our competitors.



3

Fully Enclosed Powerheads and Winders

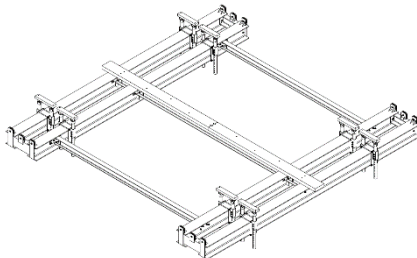
With the winders positioned between the cable beams, the life of the drive shaft is prolonged. Grooved winders protect the Gatorshield anti-corrosion coating on the drive shaft. Coupled with cable keepers, which ensure proper cable winding, the cable life is greatly extended. Heavy duty, rotomolded covers protect the drive components from the harsh marine environment.



4

Patented Adjustable Wedge Locks

Our wedge locks allow the cables to be pre-wound for easy installation and they make adjustment of cable length to level the cradle or change the pitch of the boat quick and simple. Wedge locks also make cable replacement a snap. Our competitors have fixed cable ends that can't be adjusted once installed.



5

Custom Design Experts

Our investment in the best CNC machinery gives us the most advanced manufacturing facility in the industry and allows us to design stronger, more reliable lifts – designs others can not make. Coupled with our engineering expertise, we design lifts to accommodate your individual needs, not one-size-fits-all products.

17030 Alico Center Road, Ft. Myers, FL 33967

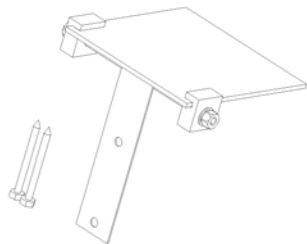
Toll Free (800) 545-5603 Ph: (239) 432-9110 F: (239) 432-0019



www.iqboatlifts.com

When Buying A Boat Lift

Consider these 10 Features...



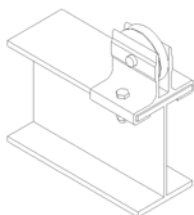
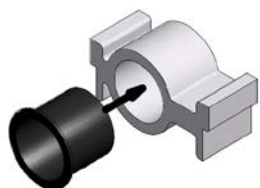
6

Stainless Steel Pile Mounting

Stainless steel piling mounts eliminate corrosion at the piling. CCA (pressure) treated wood corrodes the aluminum brackets our competitors use. Stainless steel may cost more, but it dramatically extends the life of the mounting bracket and top beam.

No-Grease Bearing

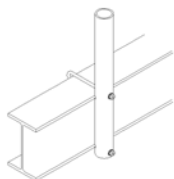
No-Grease Pulley



7

Maintenance-Free Bearings and Pulley Assemblies

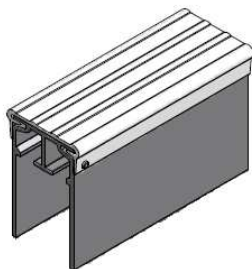
Our maintenance-free pulleys and drive bearings use a unique self-lubricating bushing that eliminates the need to climb around the lift to lubricate. Our competitors use grease bearings and pulleys that require frequent, costly maintenance. The unsightly black grease also leaks out of these bearings and pulleys, getting on your lift, dock and boat.



8

Guide Posts With PVC Covers

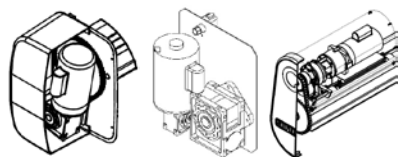
Easy to adjust, reinforced guide post base accepts a replaceable guide post insert covered with white PVC to protect against marring your boat's rub rails.



9

Aluminum Bunks

Non-marring UV resistant white vinyl slides into integrated grooves on our aluminum bunks and requires no top-side rivets that could scratch your hull. Our bunks are guaranteed not to float and are covered by a 10-year guarantee against tearing, fading, mold, and corrosion. Wood bunks and weights are also available.



Chain Drive Gear Drive Cycloidal Drive

10

Chain vs Gear vs Cycloidal Drives

Chains are a positive drive system with no belt slip. The chain drive's shock-load ruggedness, efficiency, safety, and dependability make it the best economical choice. Our Platinum lift's **Gear** drive make a truly maintenance-free system for your lift. Our **cycloidal** drives generate up to 34,700 in/lbs of output torque at an efficiency of greater than 90%, making them the most powerful, durable and fastest drive in the boat lift industry. More than twice as fast as the nearest competitor's high speed system.