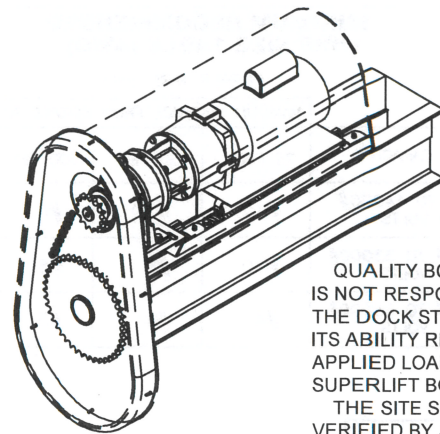
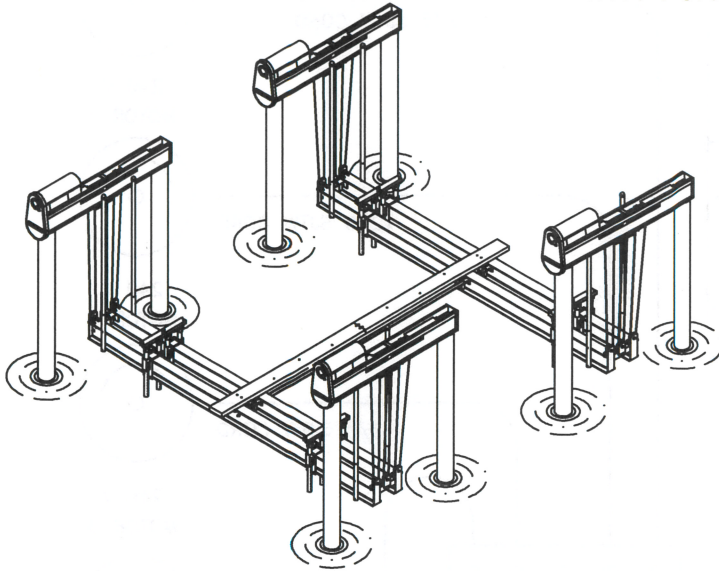


IMM QUALITY BOAT LIFTS

SUPERLIFT BOAT LIFT SPECIFICATIONS 8 POST BOAT LIFTS WITH 4 CRADLE BEAMS AND 8 CABLES



QUALITY BOAT LIFTS, INC.
IS NOT RESPONSIBLE FOR
THE DOCK STRUCTURE, OR
ITS ABILITY RESIST THE
APPLIED LOADS OF THE
SUPERLIFT BOAT LIFT.
THE SITE SHOULD BE
VERIFIED BY A LICENSED
MARINE CONTRACTOR.
APPLIED LOADS WILL BE
PROVIDED UPON REQUEST.

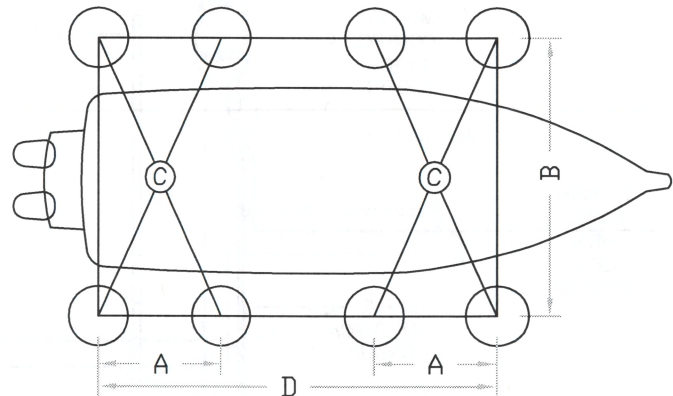
LIFT CAPACITY LBS	CABLE BEAM SIZE CUSTOM CHANNEL INCHES	GROOVED CABLE WINDER SIZE INCHES	DRIVE SHAFT SIZE INCHES	DRIVE SHAFT SPROCKET	CHAIN SIZE	GEAR DRIVE SPROCKET	GEAR DRIVE RATIO	NO. OF MOTORS & H.P.	MOTOR BRAKE TORQUE	NO. OF CABLES AND SIZE INCHES	CABLE SPREAD INCHES	INCHES OF LIFT PER MINUTE	GUIDE POST HEIGHT	BOAT BUNKS INCHES	CRADLE BEAM SIZE "BM" - INCHES
44,000	11 x .230 H 2 x .160 W	3.5 DIA. 19" LG LIFTS 19 FT.	2.875 TUBE	30 TOOTH	#80	10 TOOTH	87:1	(4) 1-1/2 H.P. 240V/44A	6 FT-LBS	.375 DIA. 100' 2 PART	24 AND ADJUST	38	10	**CUSTOM BUNK SYSTEM	12 x .310 H 7 x .620 W 216 L
54,000	12 x .266 H 2 x .172 W	3.5 DIA. 28" LG LIFTS 19 FT.	2.875 TUBE	30 TOOTH	#80	10 TOOTH	87:1	(4) 1-1/2 H.P. 240V/44A	6 FT-LBS	.375 DIA. 150' 3 PART		25	10		12 x .310 H 7 x .620 W 240 L
66,000	14 x .313 H 2 x .313 W	3.5 DIA. 28" LG LIFTS 19 FT.	2.875 TUBE	30 TOOTH	#80	10 TOOTH	87:1	(4) 1-1/2 H.P. 240V/44A	6 FT-LBS	.375 DIA. 150' 3 PART		25	10		

ALL SPACING TO CENTER OF PILING

Lift Capacity	A	B	C	D	Rec. Piling Sizes
44,000 lb.	96"	216"	236.37"	*	10" dia.
54,000 lb.	96"	240"	258.50"	*	10" dia.
66,000 lb.	96"	240"	258.50"	*	10" dia.

Note: all Dimensions $\pm 2"$

*IMM Quality Boat Lifts, Inc. will require information from the naval architect or boat builder to calculate correct spacing for dimension "D". Standard spacing for "D" is 288" unless we receive other information.



STRUCTURAL ENGINEERING REVIEW

THIS CONSTRUCTION HAS BEEN DESIGNED AS A MAIN WIND FORCE RESISTING SYSTEM, WITH CALCULATED GRAVITY AND WIND LOADS IN COMPLIANCE WITH THE FLORIDA BUILDING CODE, 6th EDITION, 2017, SECTIONS 16 & 20, ADM 2015, ASCE/SEI 7-10, AND "MINIMUM DESIGN LOADS FOR BUILDINGS AND OTHER STRUCTURES" TO WITHSTAND THE WIND LOADS ASSOCIATED WITH AN ULTIMATE WIND SPEED OF 180 MPH, EXPOSURE "D", RISK CATEGORY "I". J.L. SANDERS, PE HAS NO CONTROL OF THE MANUFACTURING, PERFORMANCE, OR INSTALLATION OF THIS PRODUCT. THESE GENERIC PLANS WERE ENGINEERED IN ACCORDANCE WITH ACCEPTED ENGINEERING PRACTICES AND DATA PROVIDED BY THE MANUFACTURER.

J.L. Sanders, PE
2515 Grates Road, NW
Monroe, GA 30656
239-671-1578

J.L. SANDERS
Reg. Florida No. 66361

Date:

SIGNATURE NOT VALID WITHOUT RAISED SEAL

DWG: 600087 Pub 4-10-19



17030 Alico Center Rd.

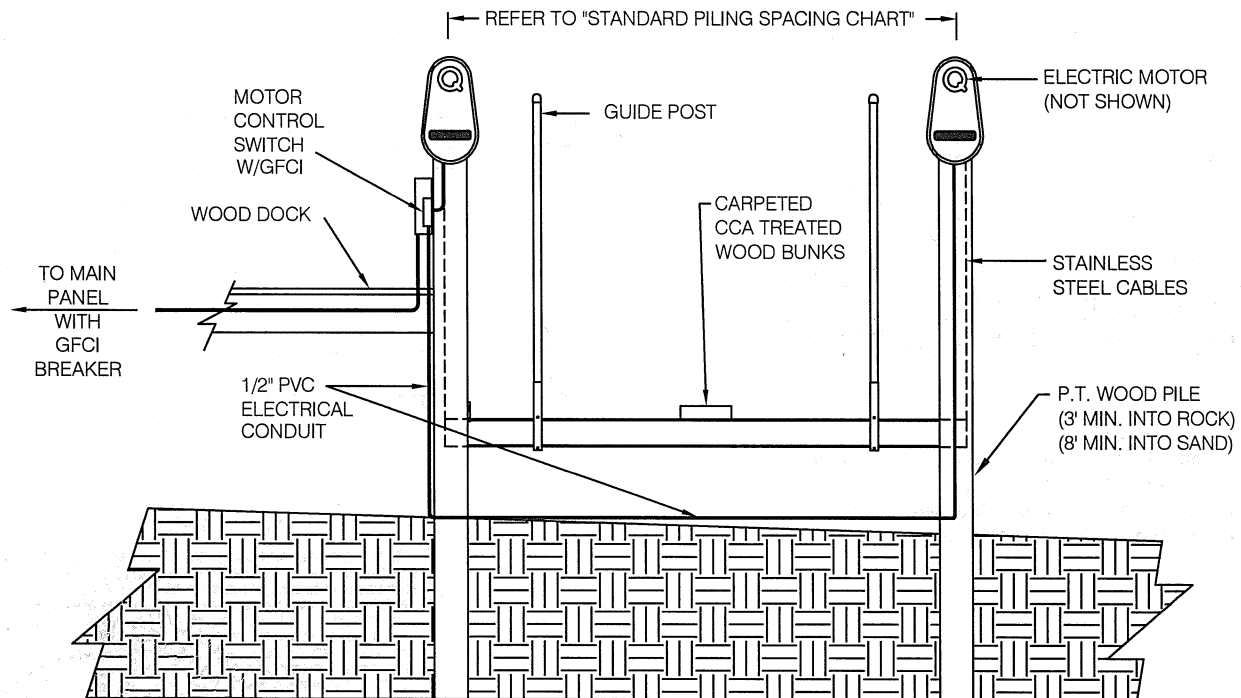
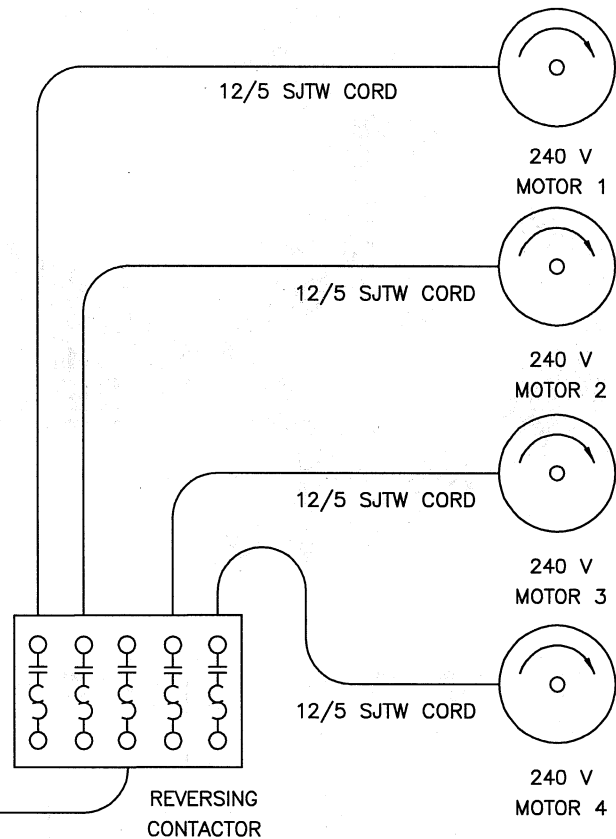
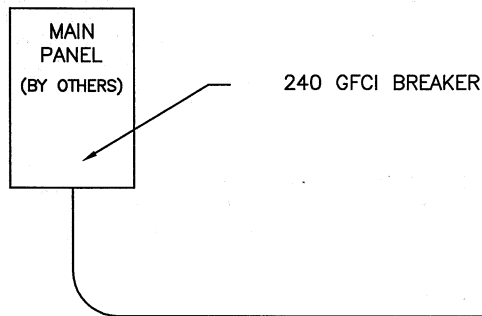
Ft. Myers, FL 33967

Phone: (800) 545-5603

Fax: (239) 432-0019

SUPERLIFT WIRING SCHEMATIC

MINIMUM RECOMMENDED WIRE SIZE TABLE (AWG)				
COPPER WIRE ONLY				
LIFT CAPACITY	MAXIMUM DISTANCE FROM SERVICE TO CONTROLLER			
	75 FEET	150 FEET	300 FEET	400 FEET
5000# TO 14000# AT 240 VOLTS	#12	#10	#6	#4
18000# TO 33000# AT 240 VOLTS	#10	#8	#6	#4
44000# TO 66000# AT 240 VOLTS	#4	#4	#3	#3



DWG: 600087 Pub 4-10-19

17030 Alico Center Rd. ▸

Ft. Myers, Fl. 33967

Phone: (800) 545-5603

Fax: (239) 432-0019